

Using TSPrint with STRUCTURECloud

What is TSPrint?

TSPrint is a third-party app included with STRUCTURECloud that allows you to print files easily from your STRUCTURECloud Remote Desktop environment to your locally connected or networked printers.

Using TSPrint is optional. When accessing STRUCTURECloud using MS Remote Desktop, printer redirection is still available without using TSPrint. However, TSPrint can increase print speed, and offers more features such as file transfers, direct print to a default printer, and print options for selected printers.

It can print a PDF file that can be saved to your local or virtual workstation. It can also email it from your virtual or local workstation.

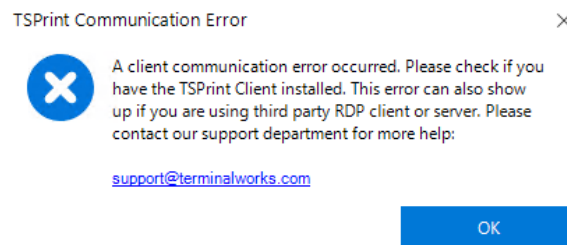
Additionally, TSPrint allows you to open a document stored in STRUCTURECloud on your local workstation or device, allowing you to view and/or save it on your local machine.

TSPrint is already installed in your STRUCTURECloud environment. However, you will need to install the TSPrint client on each workstation or device used to access STRUCTURECloud in order to use TSPrint.

The TSPrint client will work with Windows, Mac OS, Chrome OS, and Android. The appropriate TSPrint client will need to be installed on each workstation or device used to access STRUCTURECloud.

Note: Currently, there is no iOS client for use with iPhone or iPad.

If you attempt to print using the TSPrint options in STRUCTURECloud, and the TSPrint client has not been installed on your local workstation or device, then you will receive the following error:



If you encounter this or a similar error after the TSPrint client has been installed, try logging out of STRUCTURECloud and rebooting your computer or device.

Note: TSPrint will not work when accessing STRUCTURECloud using a web browser. You will still be able to print using the Remote Desktop Virtual Printer from a web browser.

Printing from DOS prompts is not supported in TSPrint.

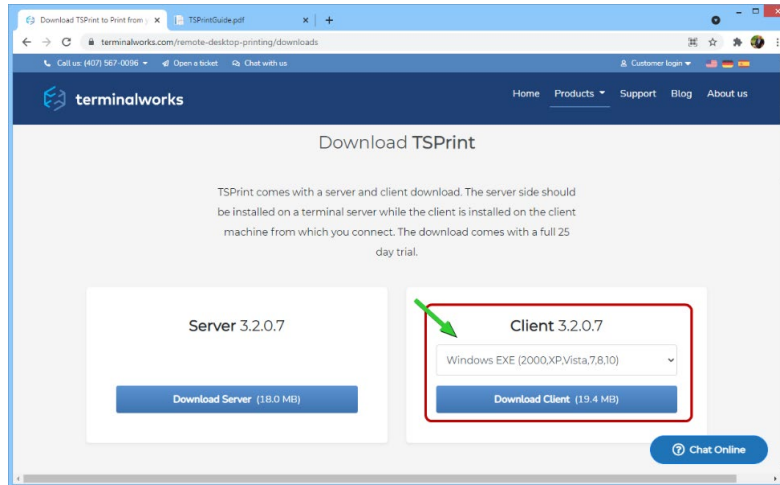
Using TSPrint with STRUCTURECloud

Downloading and Installing the TSPrint Client

From a Windows workstation or device:

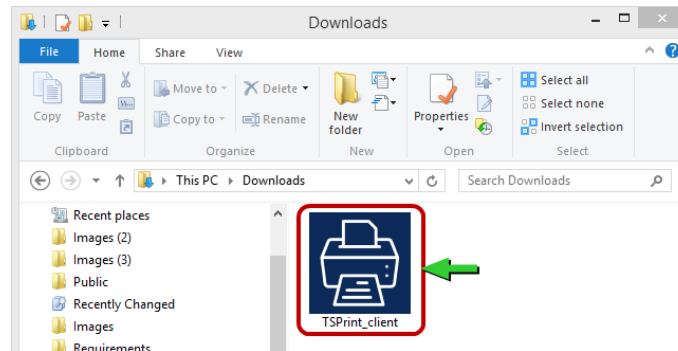
Go to: <https://www.terminalworks.com/remote-desktop-printing/downloads>.

Select 'Windows EXE' from the Client option.

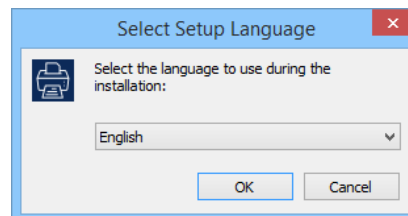


Click [Download Client]. (You may need administrative rights to download or run the client install.)

Run the 'TSPrint_client.exe' file from your browser or your Downloads folder.

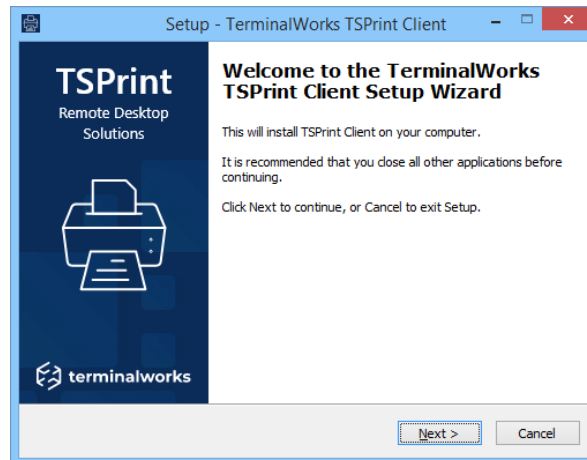


First, select your language.



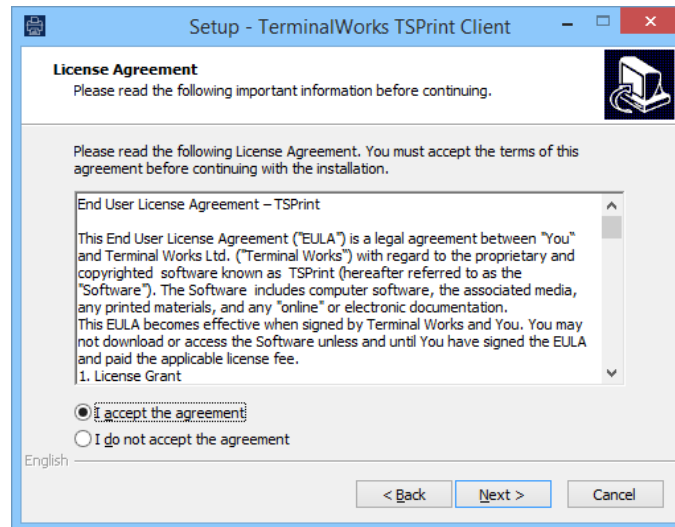
Using TSPrint with STRUCTURECloud

The Setup Wizard will open.



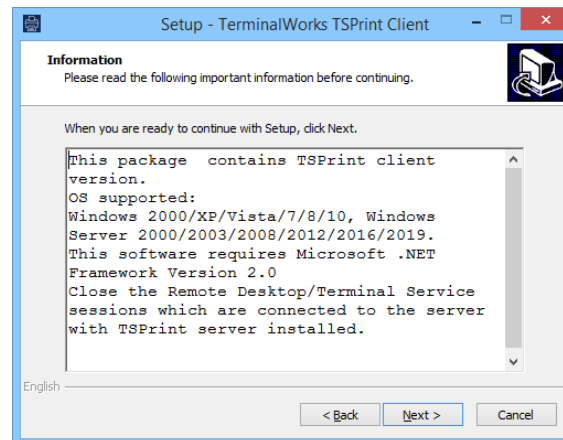
Click [Next].

The License Agreement screen will open.



Check 'I accept the agreement' and then click [Next].

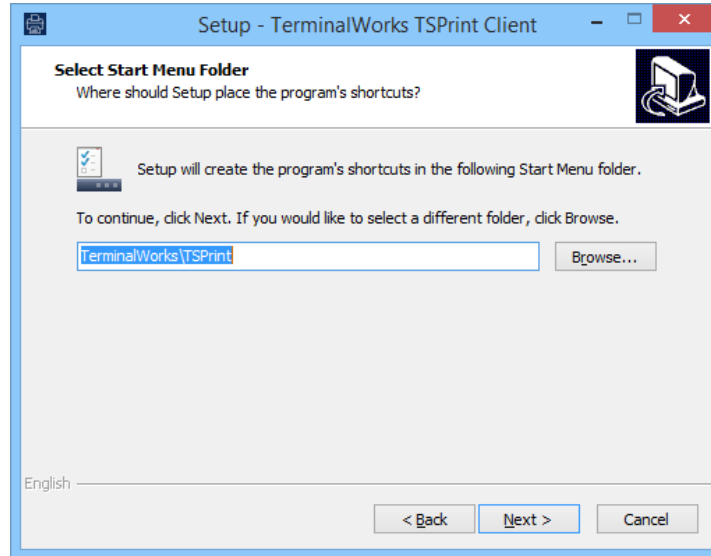
Read the Information screen.



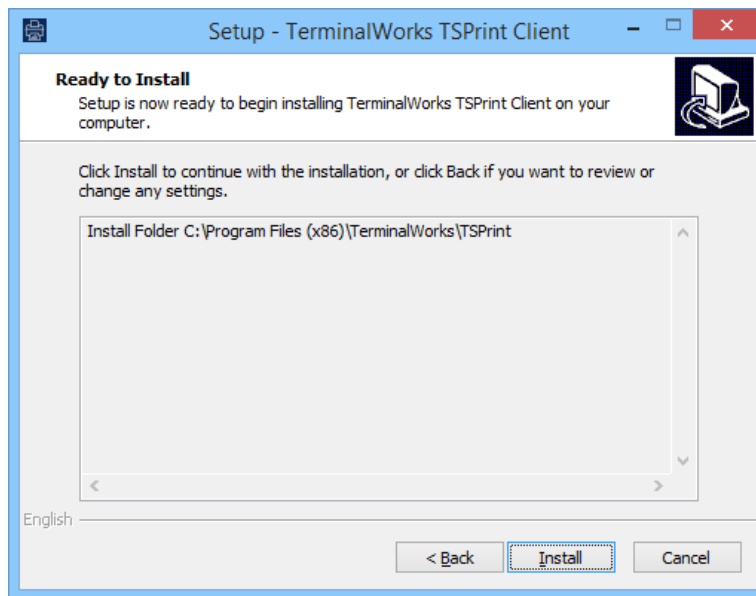
Click [Next].

Using TSPrint with STRUCTURECloud

The Select Start Menu Folder screen will display.



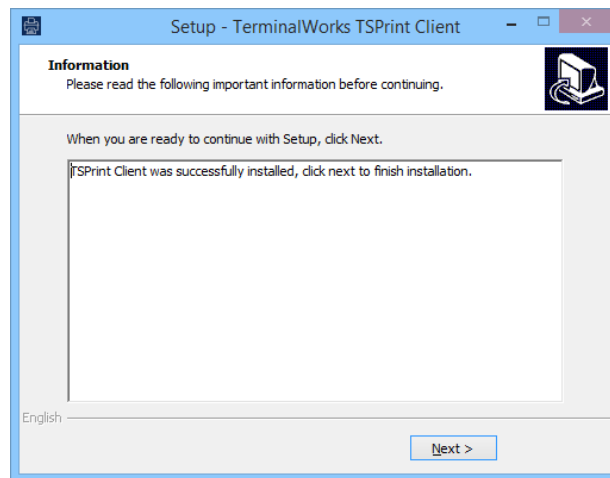
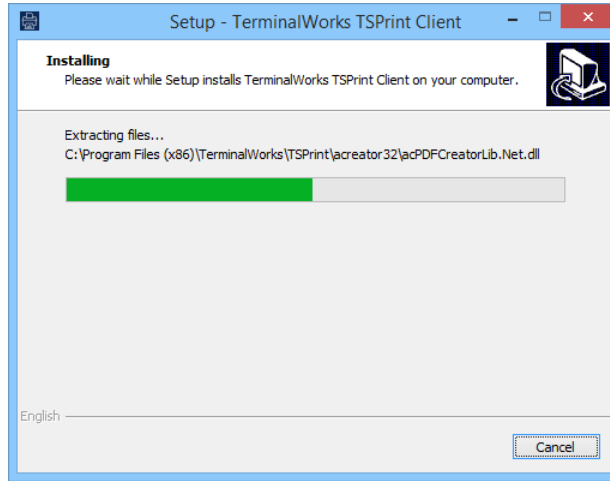
Use the default folder, or browse to select your own, and then click [Next].
The Ready to Install screen will appear.



Click [Install] to install.

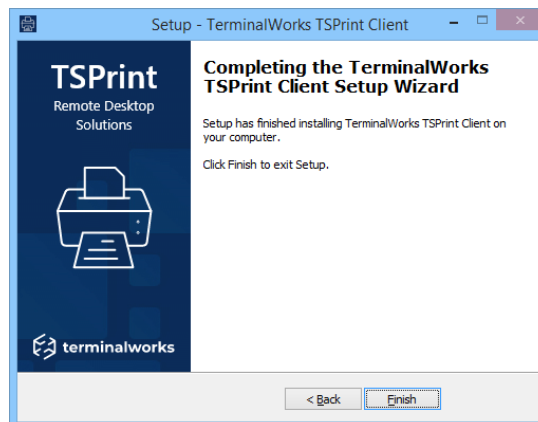
Using TSPrint with STRUCTURECloud

The TSPrint client will be installed on your Windows workstation.



When the files are finished installing, click [Next].

When the Setup is complete, click [Finish].

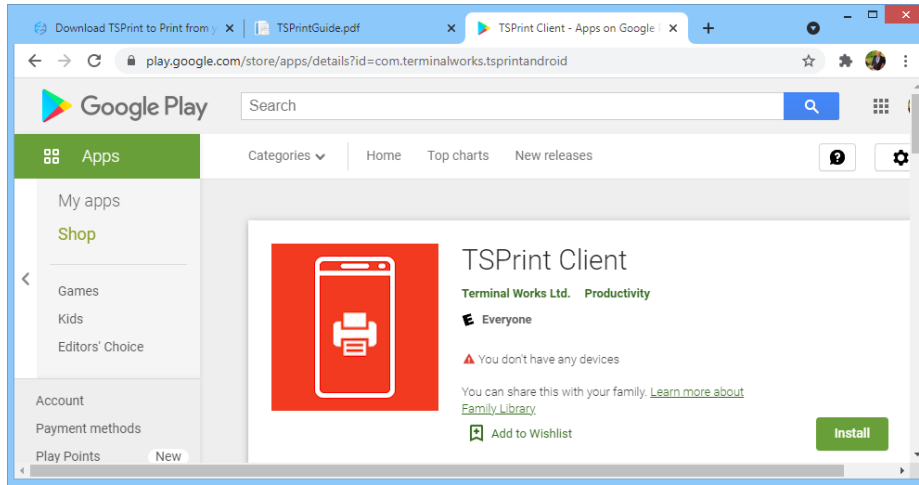


You are now ready to use TSPrint.

Using TSPrint with STRUCTURECloud

From an Android, Chromebook, or Chrome OS device:

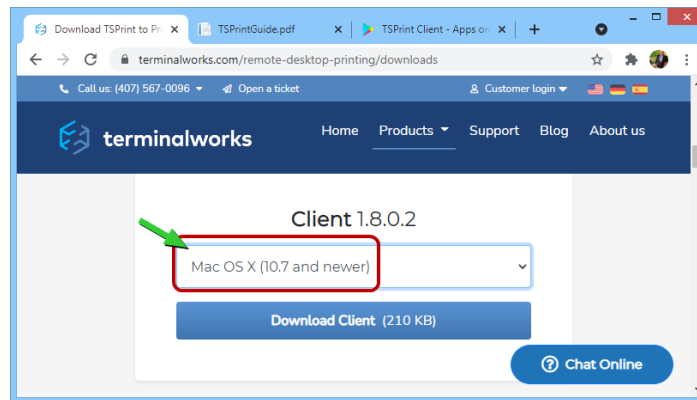
Install the TSPrint client from the Google Play store.



From a Mac:

Go to: <https://www.terminalworks.com/remote-desktop-printing/downloads>.

Select the appropriate MAC OS from the Client option.



Click [Download Client].

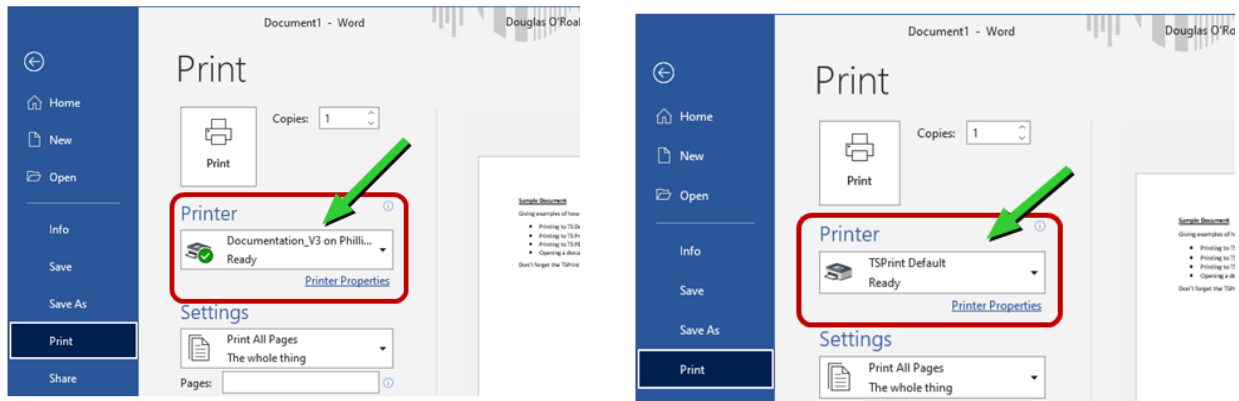
Open the TSPrint Client zip file.

Run the TSPrintClient pkg file to install the client.

Using TSPrint with STRUCTURECloud

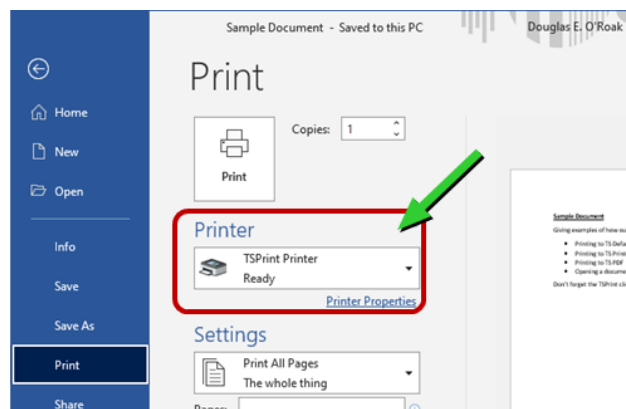
Printing with TSPrint Default

When you select TSPrint Default as your print option, your document will print to your default printer.

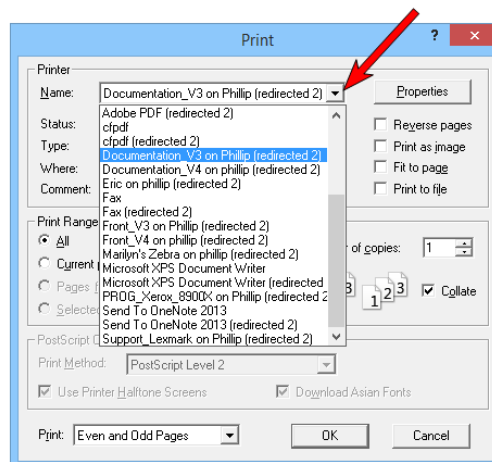


Printing with TSPrint Printer:

When you select TSPrint Printer as your print option, you will be able to select any local or networked printer available to your workstation or device.



After you select TSPrint Printer as your printer choice, a dialog box will display.

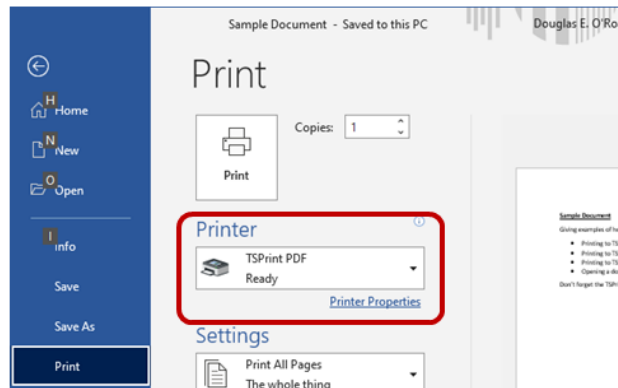


Select the printer, and choose your print options.

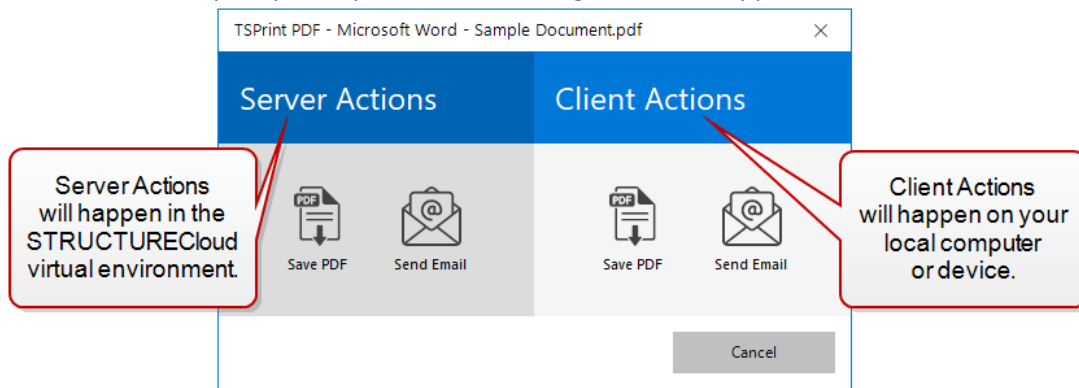
Using TSPrint with STRUCTURECloud

Printing with TSPrint PDF:

When you select TSPrint PDF, you will be able to create and/or email a PDF document.

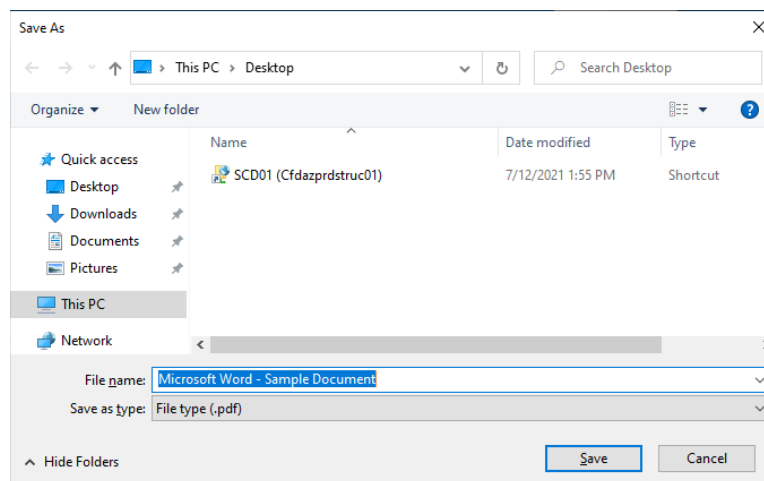


When you select TSPrint PDF as your print option, the following screen will appear.



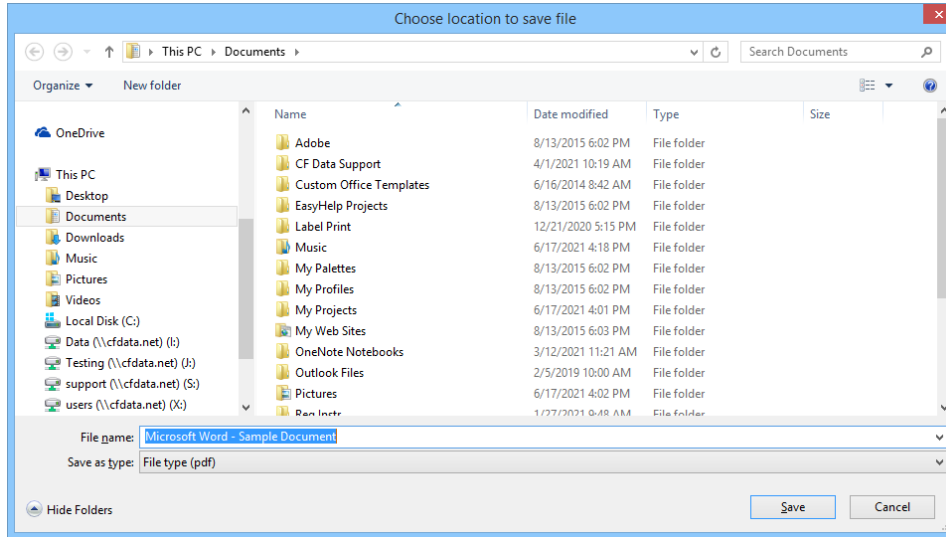
- Save PDF will print and save the document as a PDF file.
- Send Email will open a blank email with the PDF document attached. The 'To' and 'Subject' lines will be blank.
- Server Actions saves to or emails from STRUCTURECloud.
- Client Actions saves to or emails from your local workstation or device.

When saving to STRUCTURECloud, the following screen will appear.

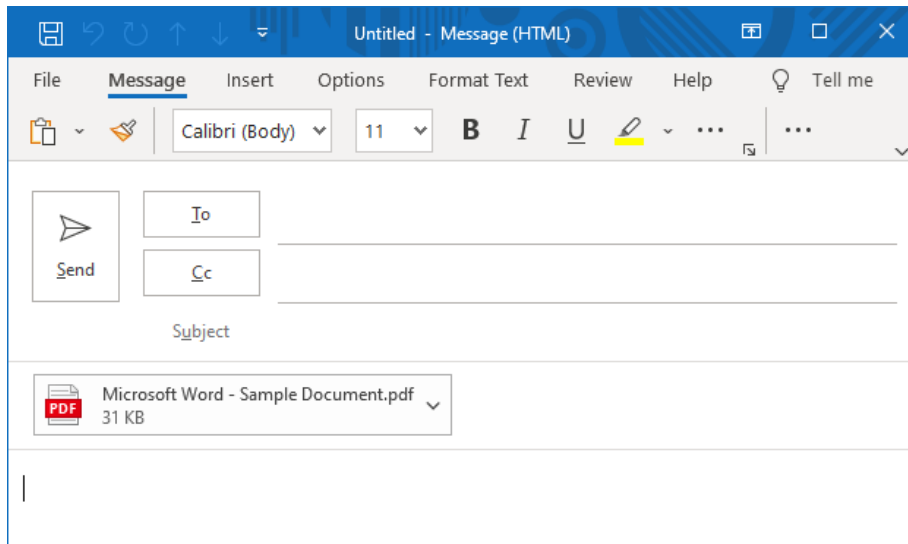


Using TSPrint with STRUCTURECloud

This screen appears when saving to your local workstation.



When emailing a PDF attachment, and email will open in Outlook with the PDF attached.

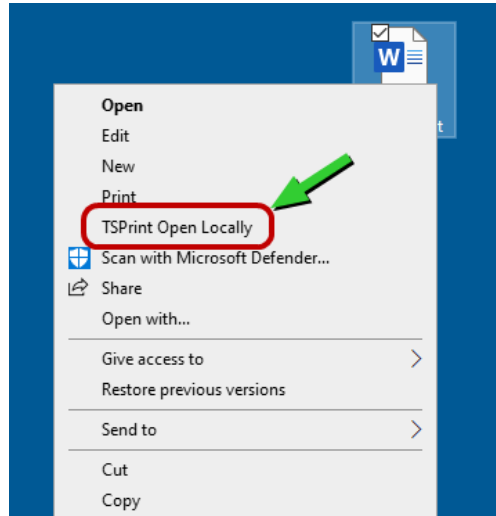


Using TSPrint with STRUCTURECloud

Using TSPrint to Open Files Locally

TSPrint allows you to open files saved in STRUCTURECloud on your local workstation or device. Once open locally, you may then view, save, or print them from the local device.

Right-click on the file you wish to open locally, then select TSPrint Open Locally.



The file will open on your local workstation or device.